

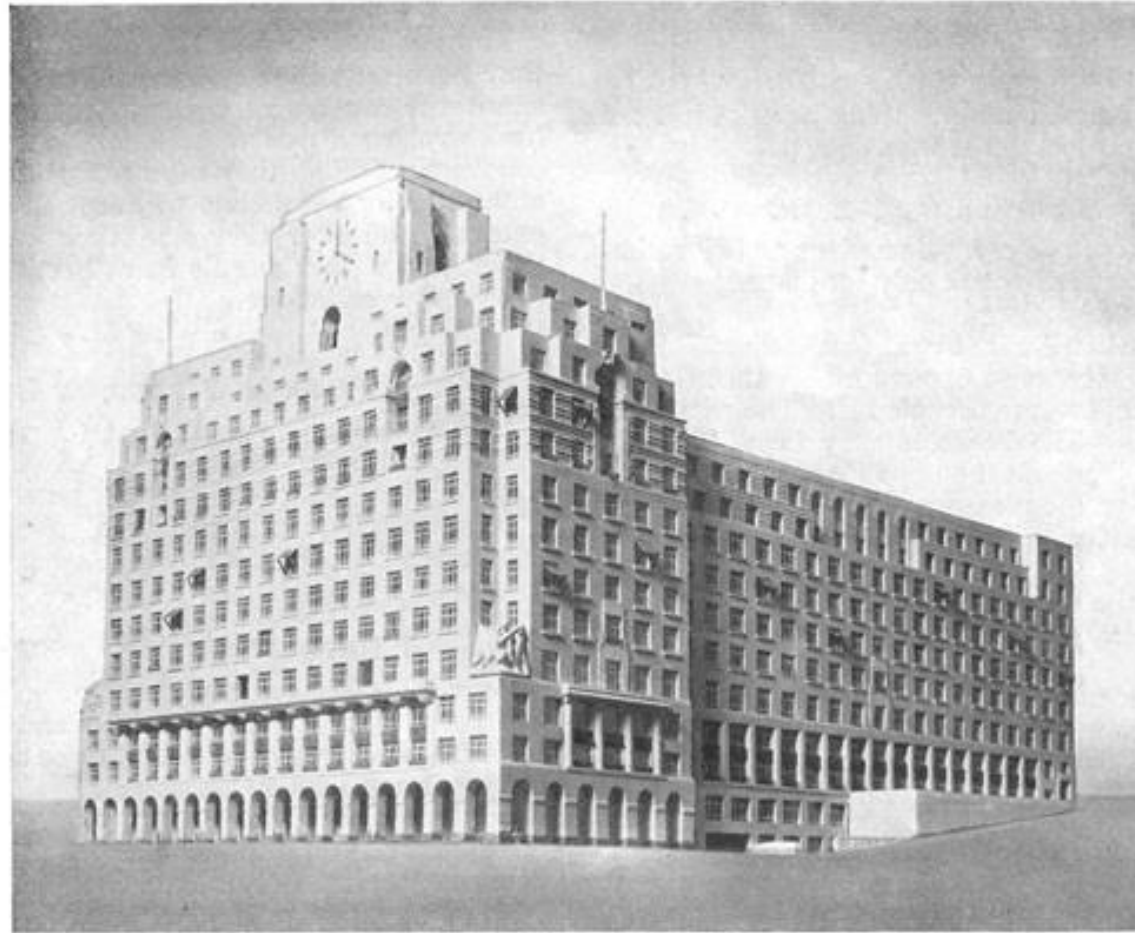
Hotel Cecil from Victoria Embankment, early 1900s



Hotel Cecil, North Façade, The Strand, ca. 1924

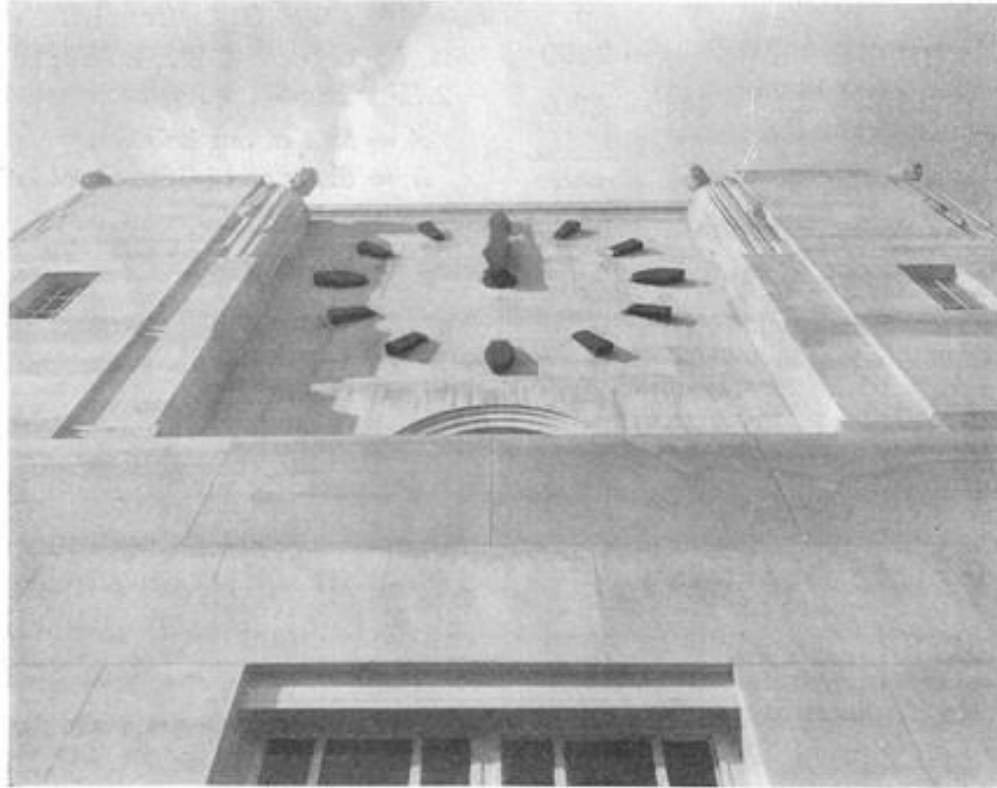


Model of Shell-Mex House showing front to Embankment and elevation to side street



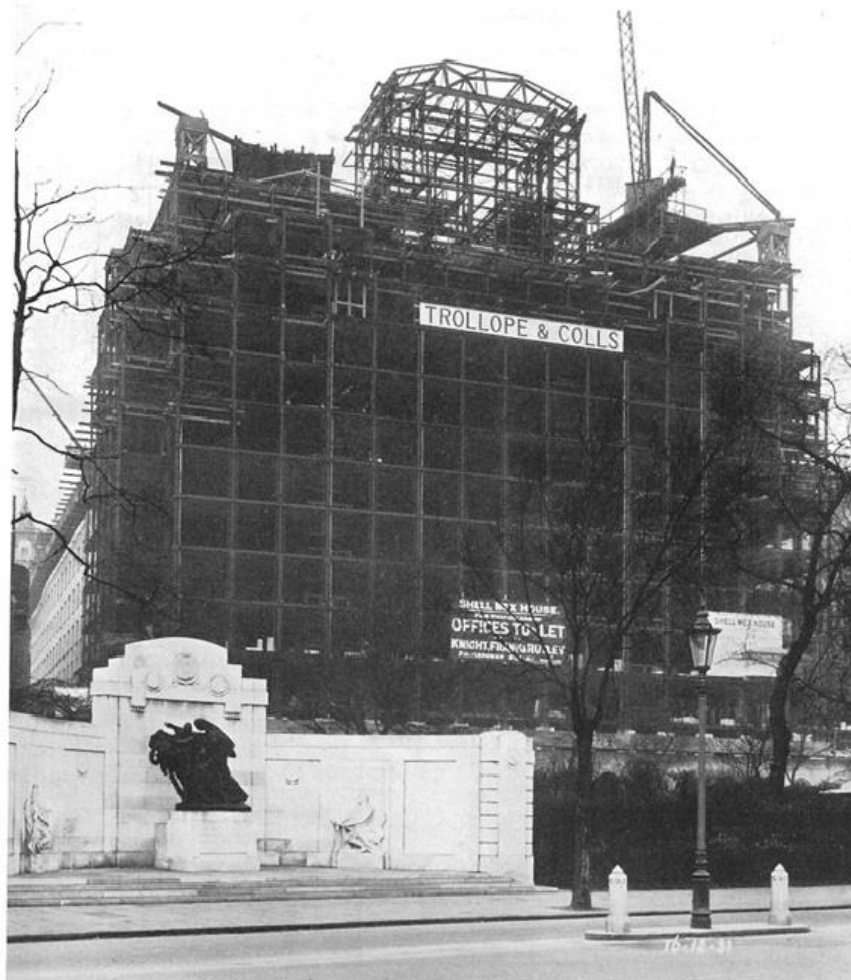
Model of Shell-Mex House, showing front to the Embankment and elevation to side street

Shell-Mex House Part 2: Design features



View looking up the clock tower showing the largest clock dial in Great Britain (in 1932)

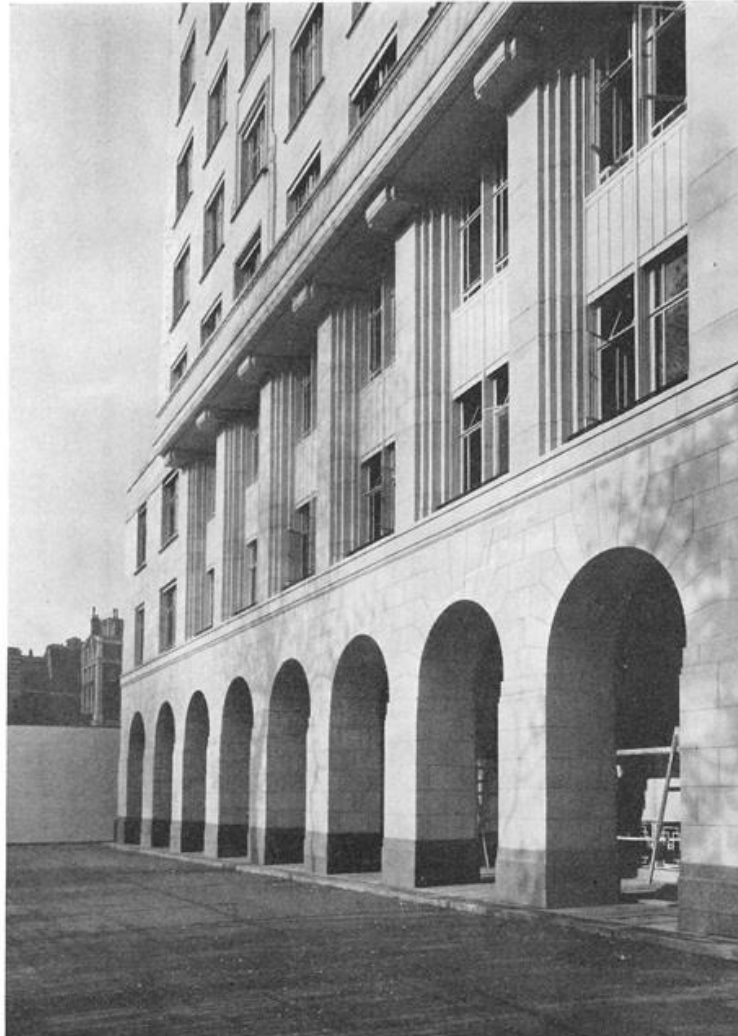
Shell-Mex House viewed from the Embankment December 1931



View from Victoria Embankment



Part of the colonnade facing the Embankment



Entrance hall from the Embankment



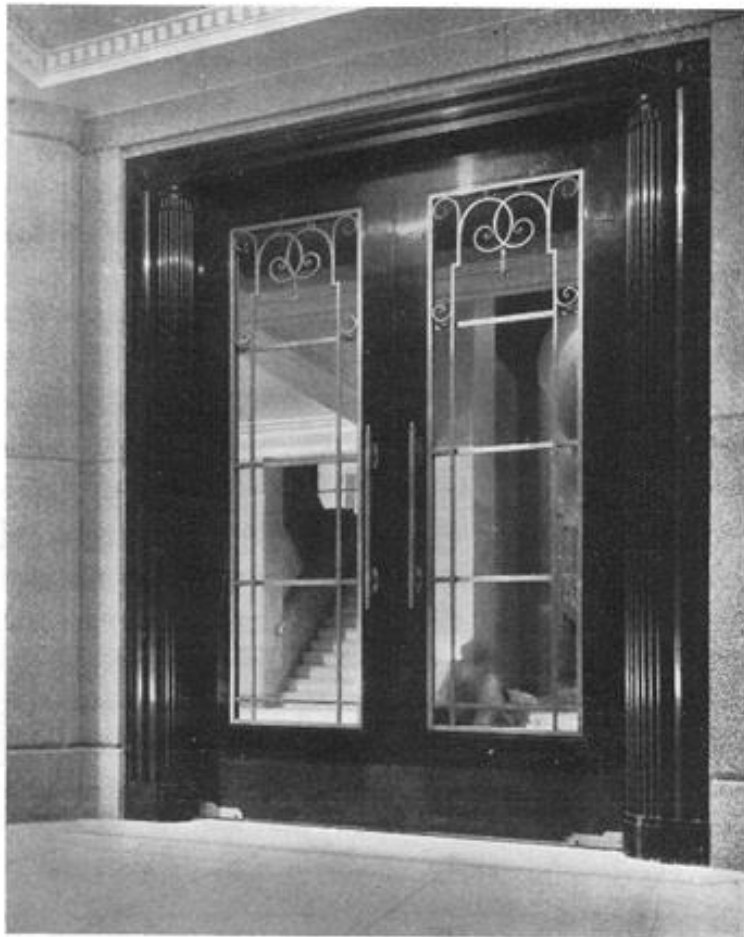
Side elevation from corner of Savoy Theatre



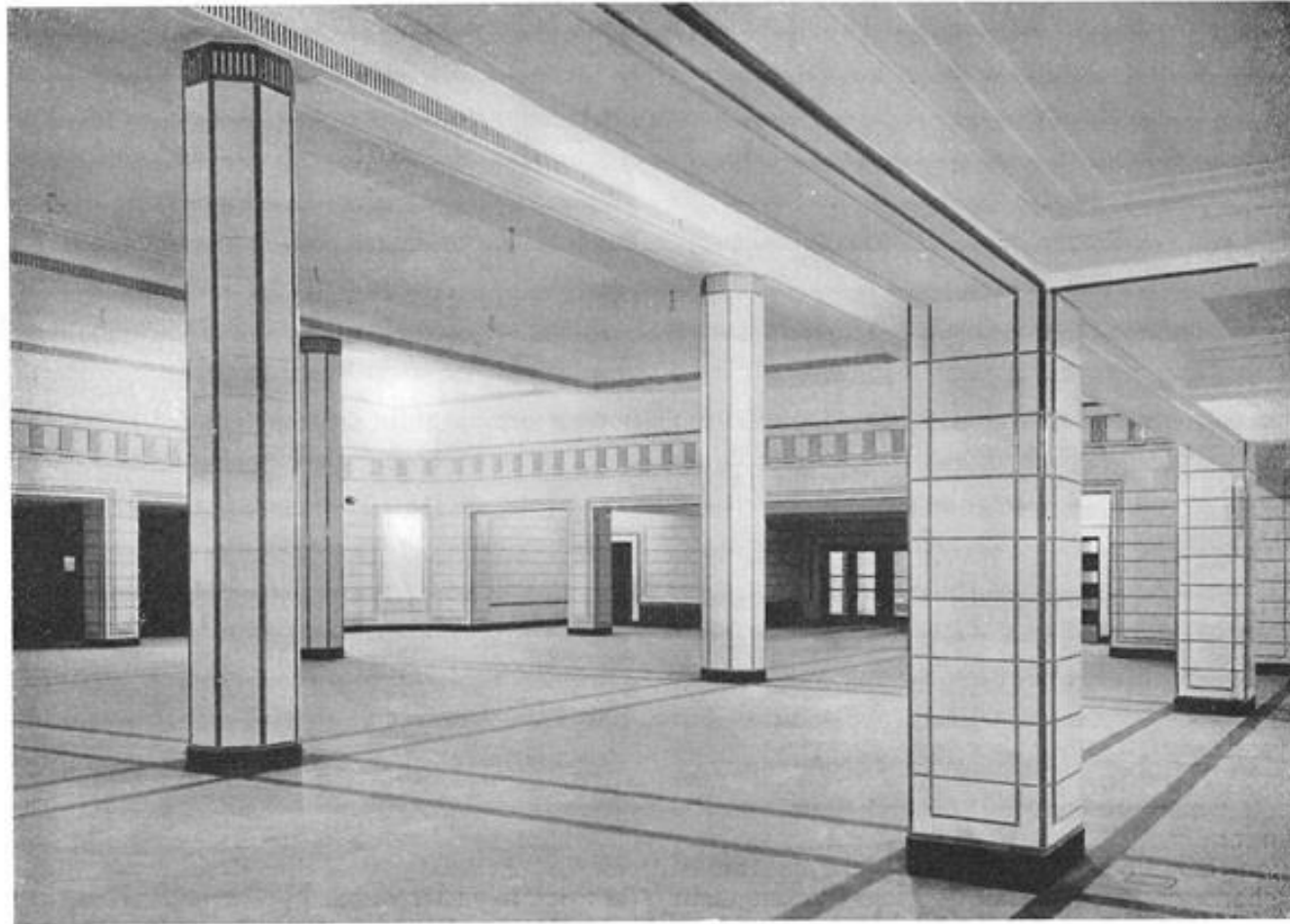
View of quadrangle adjacent to Strand



Vestibule doors to Embankment entrance



View of restaurant showing tile treatment to wall and piers



The construction of Shell-Mex House



Compiled by Clive Dunn for the Final Annual General Meeting of
Shell-Mex & BP 44 Association, 16 October 2025

Farewell

